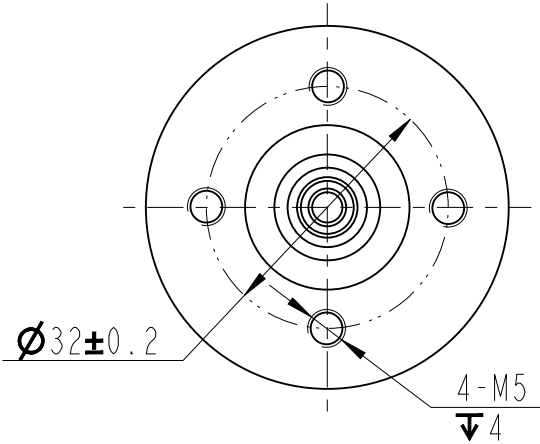
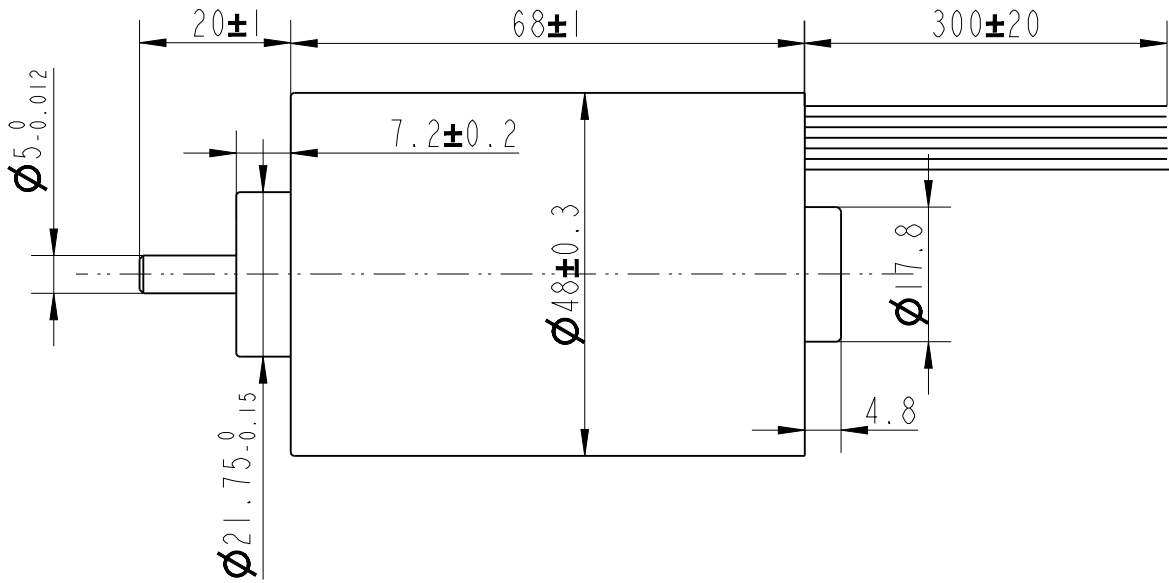
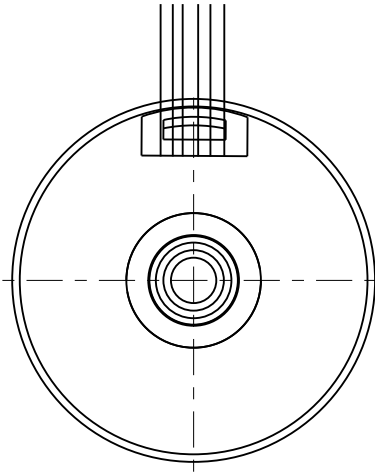
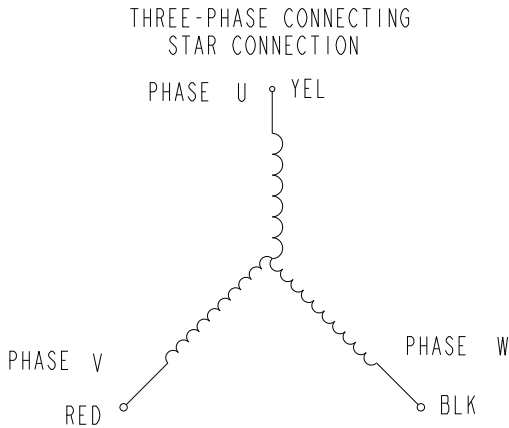
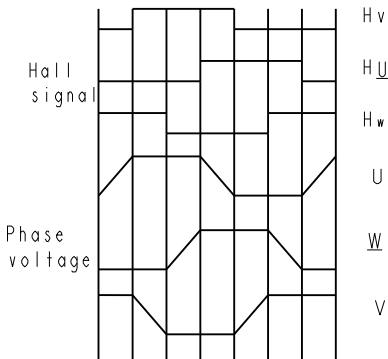


此电机机壳与定子间需增加绝缘片（样品阶段自制）



注意因为历史原因 此相位关系图顺序不是UVW
仔细查看

CCW from shaft side



NUMBER OF PHASE	绕组相数	3	Wires for Phases UL1430 AWG20			
NUMBER OF POLES	极数	10	PHASE U	PHASE V	PHASE W	
LINE TO LINE RESISTANCE	线电阻	0.79±10% ohms@20°C	YEL	RED	BLK	
LINE TO LINE INDUCTANCE	线电感	0.9±20% mH@1kHz	Wires for Hall UL1430 AWG26			
NOMINAL VOLTAGE	额定电压	24 VDC	HALL Vc	Hu	Hv	Hw
NO LOAD SPEED	空载转速	3800±10% RPM	RED	BLU	GRN	WHT
NO LOAD CURRENT	空载电流	<0.5 A				BLK
RATED TORQUE	额定转矩	180 mN.m	<div>PERMISSIBLE RADIAL+AXIAL FORCE</div>			
RATED SPEED	额定转速	3000±10% RPM				
RATED CURRENT	额定电流	3.6 A				
PEAK TORQUE	峰值扭矩	257 mN.m				
PEAK CURRENT	峰值电流	5 A				
BACK EMF CONSTANT	反电势常数	4.45±10% Vrms/kRPM				
TORQUE CONSTANT	转矩常数	50±10% mN.m/A(REF)				
INSULATION CLASS	绝缘等级	B 130°C				
DIELECTRIC STRENG	介电强度	600VAC ISEC				
INSULATION RESIST	绝缘电阻	100MOhm @500VDC				
ROTOR INERTIA	转子转动惯量	80g.cm²	AXIAL-FORCE	轴向压力	Fa=10 N Max	
WEIGHT	重量	0.5Kg	DISTANCE	距离	a=10 mm	
OPERATION AMBIENT	使用环境	Ambient temperature:-20...+50°C,humidity Max.85%(No condensation)				
STORAGE AMBIENT	存储环境	Ambient temperature:-20...+85°C,humidity Max.85%(No condensation)				

A			DESIGN	DATE	P/N.
REV	ECN NO.	DESCRIPTION	孙乙平	2024-08-27	3.1.02.048.0026
UNLESS OTHERWISE SPECIFIED TOLERANCES: DECIMALS: .X ±0.5 .XX ±0.25 .XXX ±0.1 UNIT: mm DO NOT SCALE DRAWING		MATERIAL	WEIGHT	CHECK	TITLE
				孙乙平	Specifications
		SHEET	1 OF 1	张长巧	USED ON
		FIRST ANGLE PROJECTION	SCALE	APPD	FL48CBL68-24V-3061A
			1:1	唐成文	DWG NO.
					REV A
					ROLLING MOTOR

1.1.13.PL423-503	绝缘片	I		
1.1.04.EB482-505	后端盖	I		
1.2.06.WS35-000	波形垫圈	I		D16±0.2
1.2.04.688005	轴承	I		
2.3.02.RT48-520	转子	I		FL48CBL68-24V-3061A
1.1.14.PL424-540	护线套	I		FL42CBL60-24V-5943-1E
1.2.04.698002	轴承	I		
2.2.02.ST48-522	定子	I		FL48CBL68-24V-3061A
1.1.06.EB483-503	机壳	I		
PN号		名称	数量	单位
		备注		