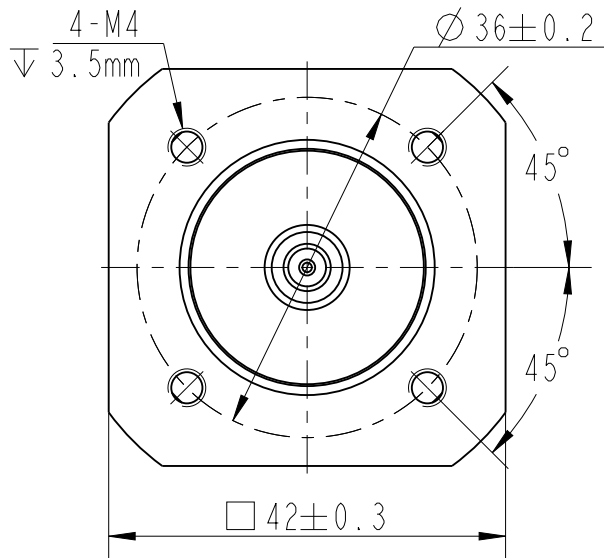
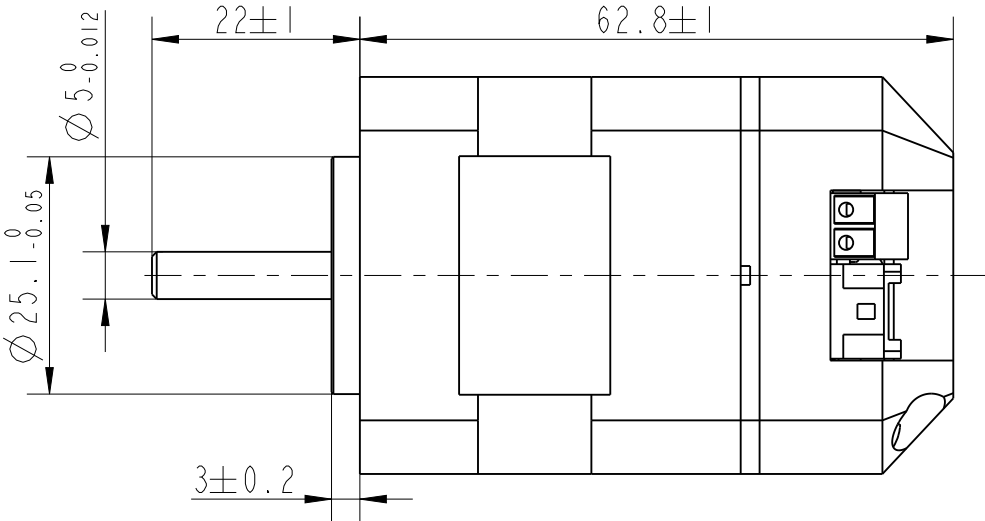
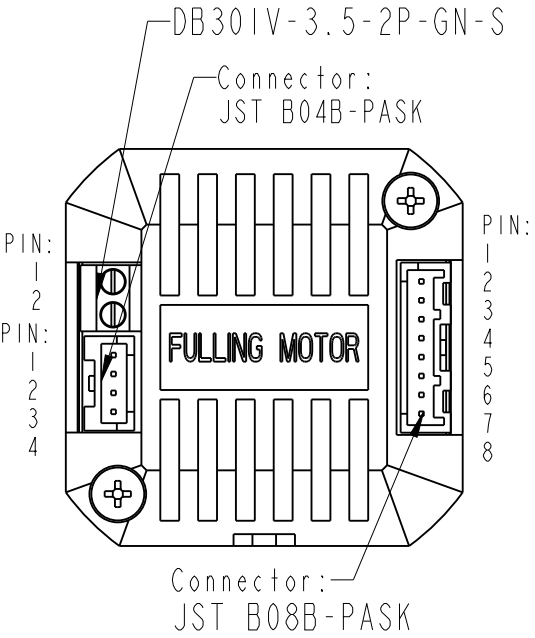


REV	ECN	NO	DESCRIPTION	DRN	APP'D	DATE

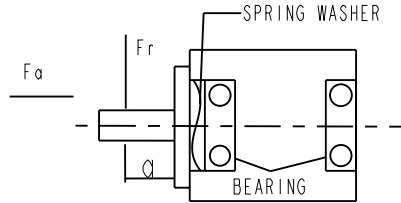


DB301V-3.5-2P-GN-S	
PIN	Description
1	VIN
2	GND

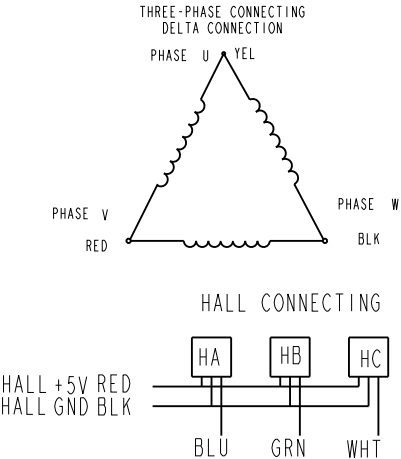
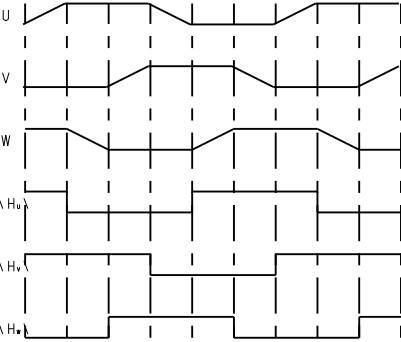
JST B04B-PASK	
PIN	Description
1	485_A
2	485_B
3	485_A
4	485_B

JST B08B-PASK	
PIN	Description
1	X0
2	X1
3	X2
4	X3
5	XCOM
6	Y0
7	Y1
8	YCOM

NUMBER OF PHASE	绕组相数	3	装驱动器前自家测试接线		
NUMBER OF POLES	极数	8	Wires for Phases UL1430 AWG20		
LINE TO LINE RESISTANCE	线电阻	$1.5 \pm 10\%$ ohms@20°C	PHASE U	PHASE V	PHASE W
LINE TO LINE INDUCTANCE	线电感	$2.1 \pm 20\%$ mH@1kHz	YEL	RED	BLK
NOMINAL VOLTAGE	额定电压	24 VDC	Wires for Hall UL3265 AWG28		
NO LOAD SPEED	空载转速	$6500 \pm 10\%$ RPM	HALL Vcc	Hu	Hv
NO LOAD CURRENT	空载电流	0.5 A	RED	BLU	GRN
RATED TORQUE	额定转矩	0.0625 N.m	Hw	WHT	HALL Gnd
RATED SPEED	额定转速	4000 RPM	BLK		
RATED CURRENT	额定电流	1.8 A	PERMISSIBLE RADIAL+AXIAL FORCE		
PEAK TORQUE	峰值转矩	0.19 N.m			
PEAK CURRENT	峰值电流	5.4 A			
BACK EMF CONSTANT	反电势常数	$2.69 \pm 10\%$ Vrms/kRPM			
TORQUE CONSTANT	转矩常数	0.036 N.m/A			
INSULATION CLASS	绝缘等级	B 130°C	AXIAL-FORCE	轴向压力	Fa=10 N Max
DIELECTRIC STRENG	介电强度	650VAC ISEC	DISTANCE	距离	a=20 mm
INSULATION RESIST	绝缘电阻	100MOhm @500VDC	RADIAL-FORCE	径向压力	Fr=28 N Max
ROTOR INERTIA	转子转动惯量	24 g.cm ²	SHAFT RADIAL PLAY	径向间隙	0.02mm Max.@4.5N
WEIGHT	重量	0.32 Kg	SHAFT AXIAL PLAY	轴向间隙	0.08mm Max.@4.5N
OPERATION AMBIENT	使用环境	Ambient temperature:-20...+50°C,humidity Max.85%(No condensation)			
STORAGE AMBIENT	存储环境	Ambient temperature:-20...+85°C,humidity Max.85%(No condensation)			



CCW COMMUTATION
VIEWED FROM OUTPUT SHAFT



A			DESIGN	DATE	P/N.	***	
REV	ECN NO.	DESCRIPTION	HX	241015	TITLE	Specifications	
UNLESS OTHERWISE SPECIFIED TOLERANCES: DECIMALS: .X ±0.5 .XX ±0.25 .XXX ±0.1 UNIT: mm DO NOT SCALE DRAWING		MATERIAL	WEIGHT	CHECK	USED ON	iBLD42NR-40-H-T	
			SHEET	STANDARDIZATION	DWG NO.		REV A
		FIRST ANGLE PROJECTION	SCALE	APPD	FULLING MOTOR		
			1:1				